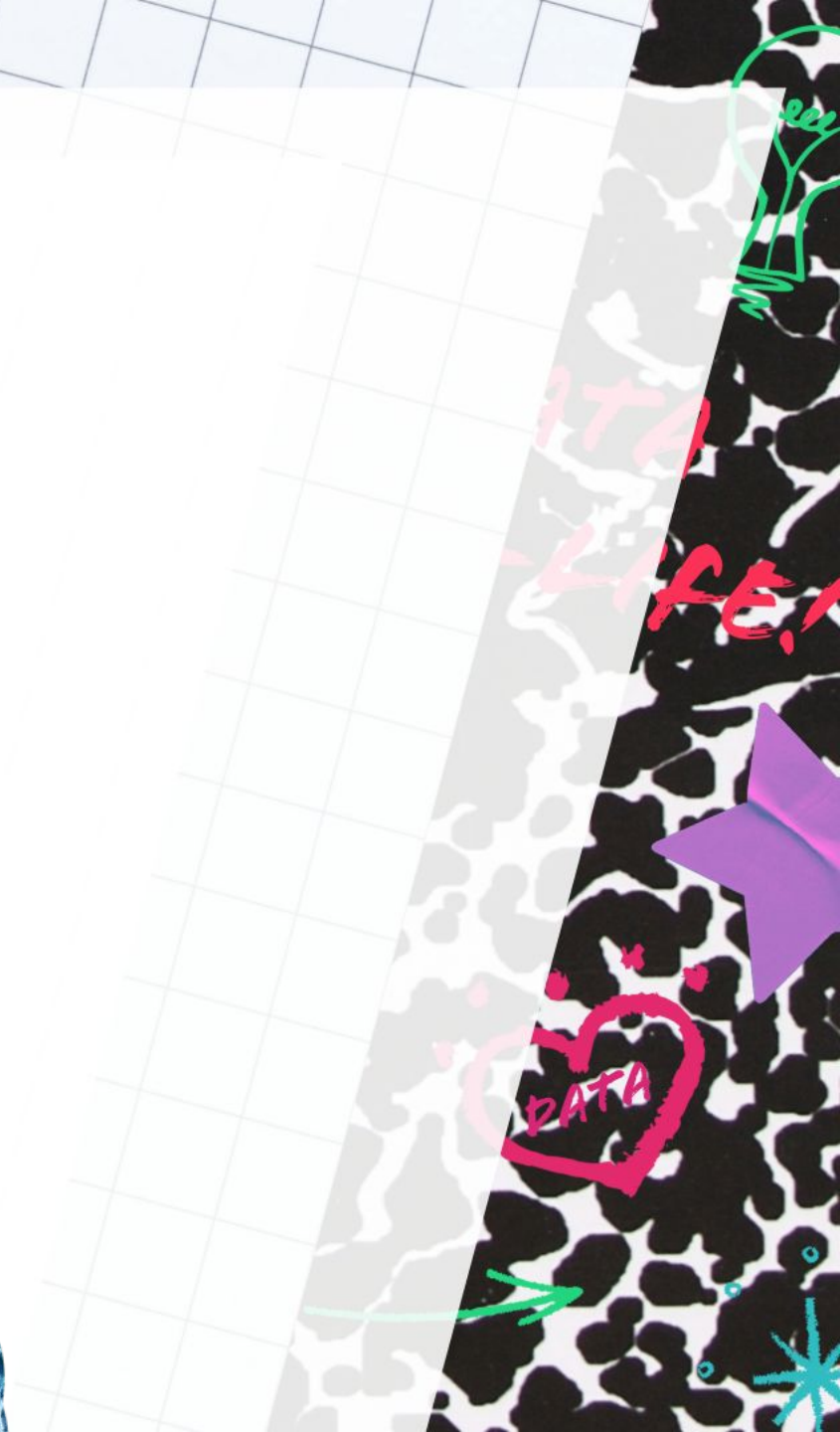


Beyond Year One:

Data Strategies for Student Retention



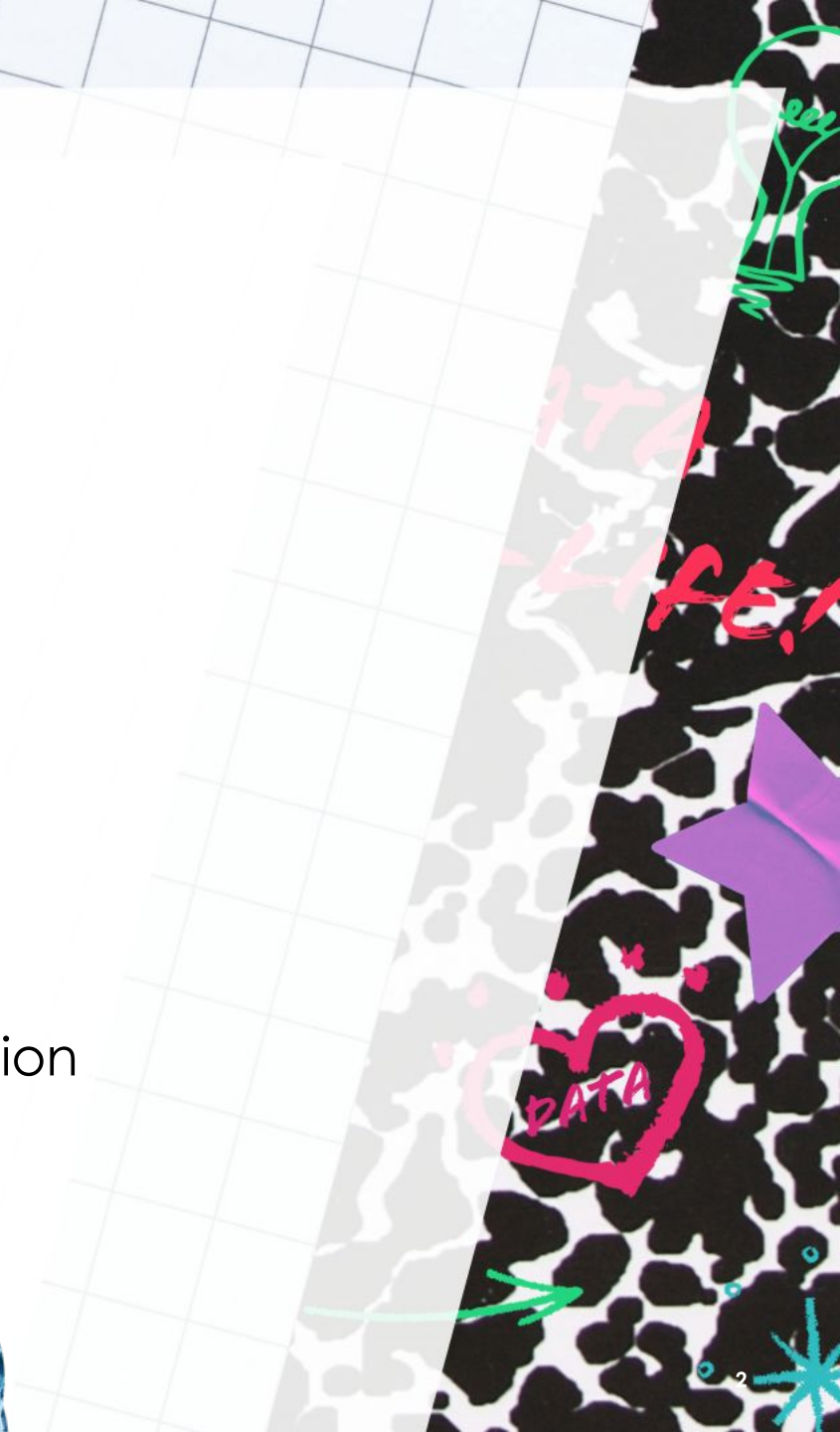
Weber State Data Teams

Weber State Data:

- Office of Student Success Analytics
- Institutional Research
- Institutional Effectiveness
- Information Technology (IT)

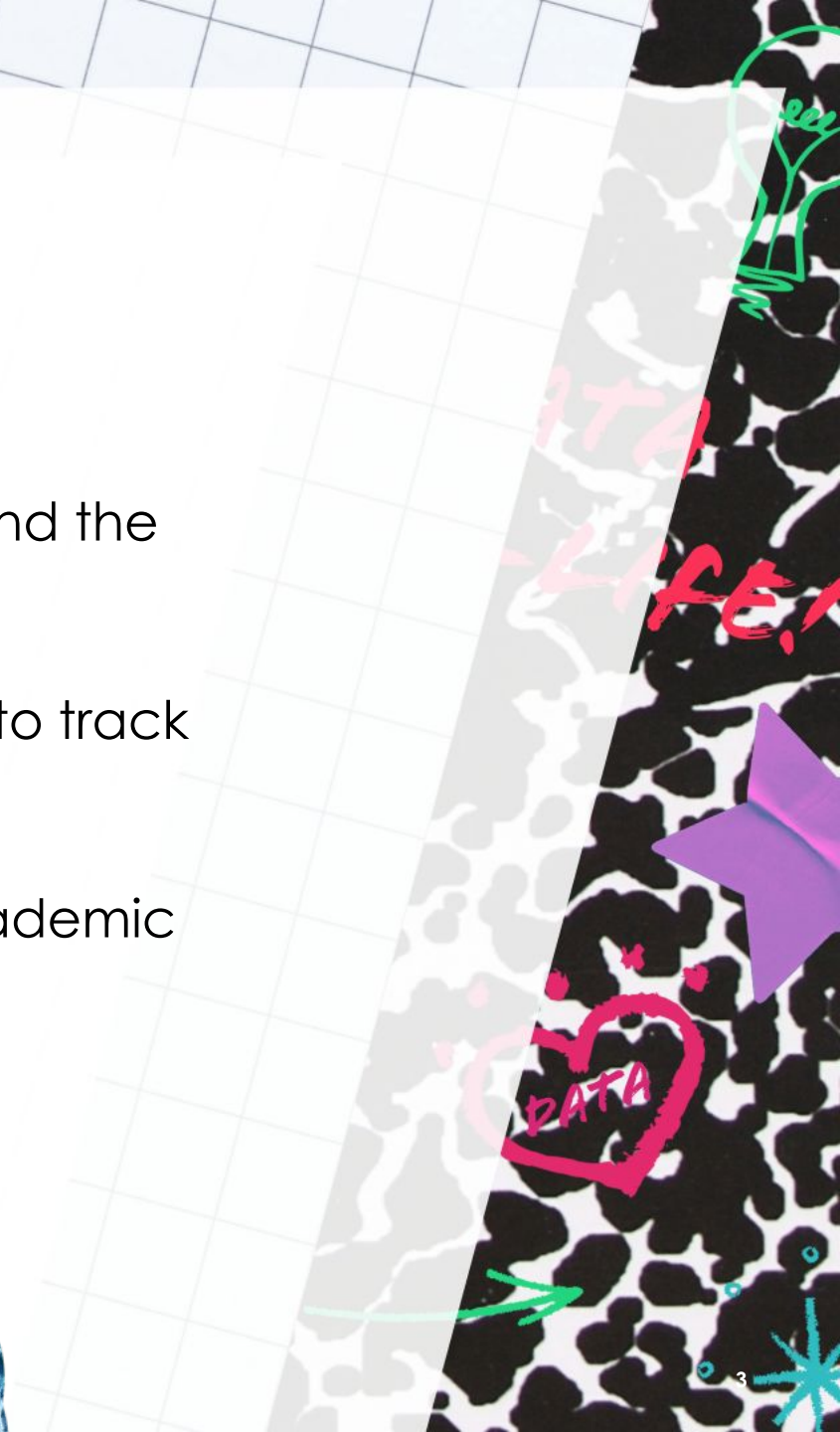
Goals:

- Serve WSU **faculty and staff**
- Provide **high-quality** data resources, tools, and education
- Empower teams to make **data-informed decisions**

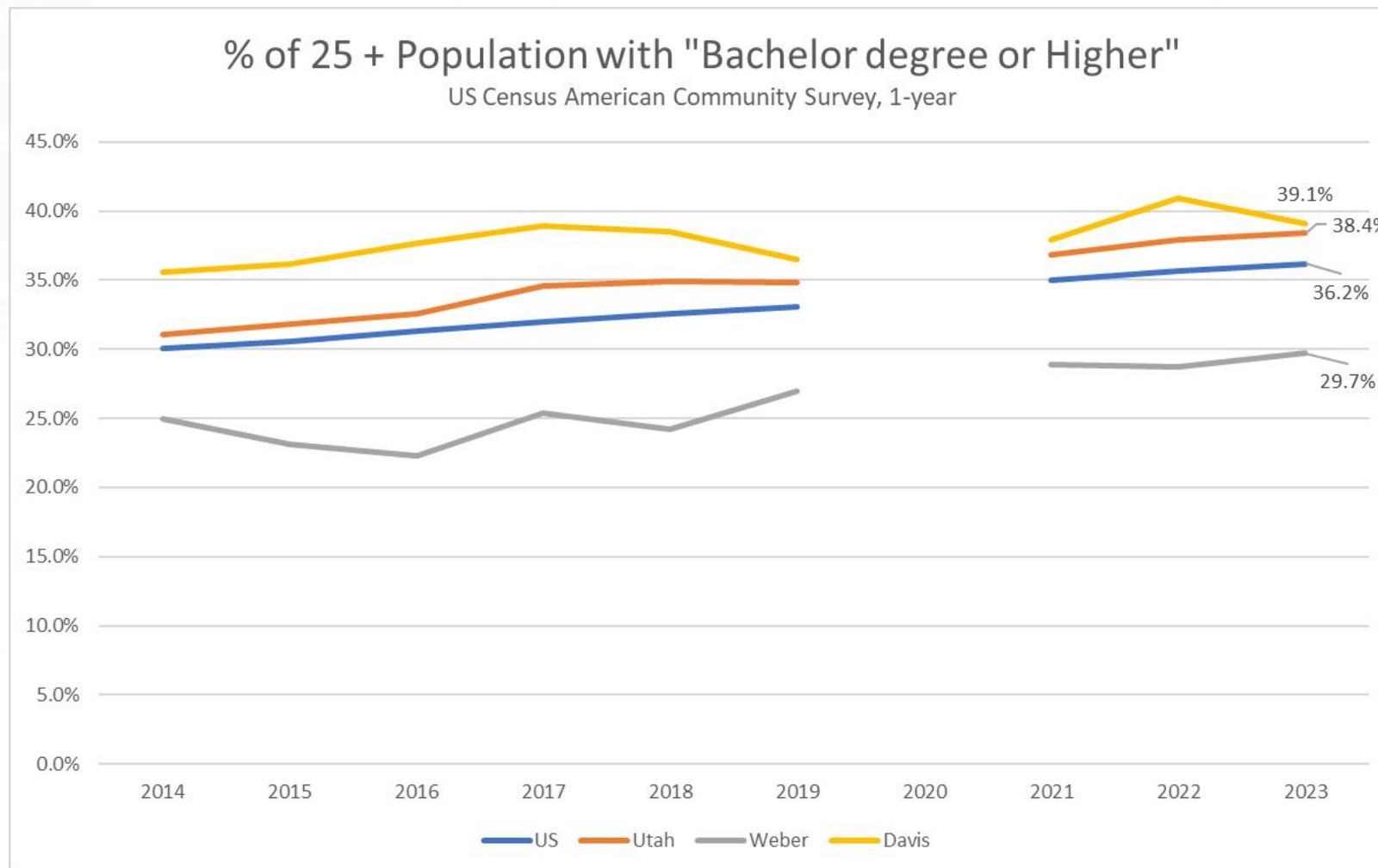


Learning Objectives

- Understand the **importance of student persistence** beyond the first year
- Identify **three relevant dashboards** in the Report Gallery to track student persistence rates
- **Locate and identify persistence trends** for a college, academic program, or key student demographic
- Increase **data literacy** and **data fluency**



% of 25+ Population with Bachelor

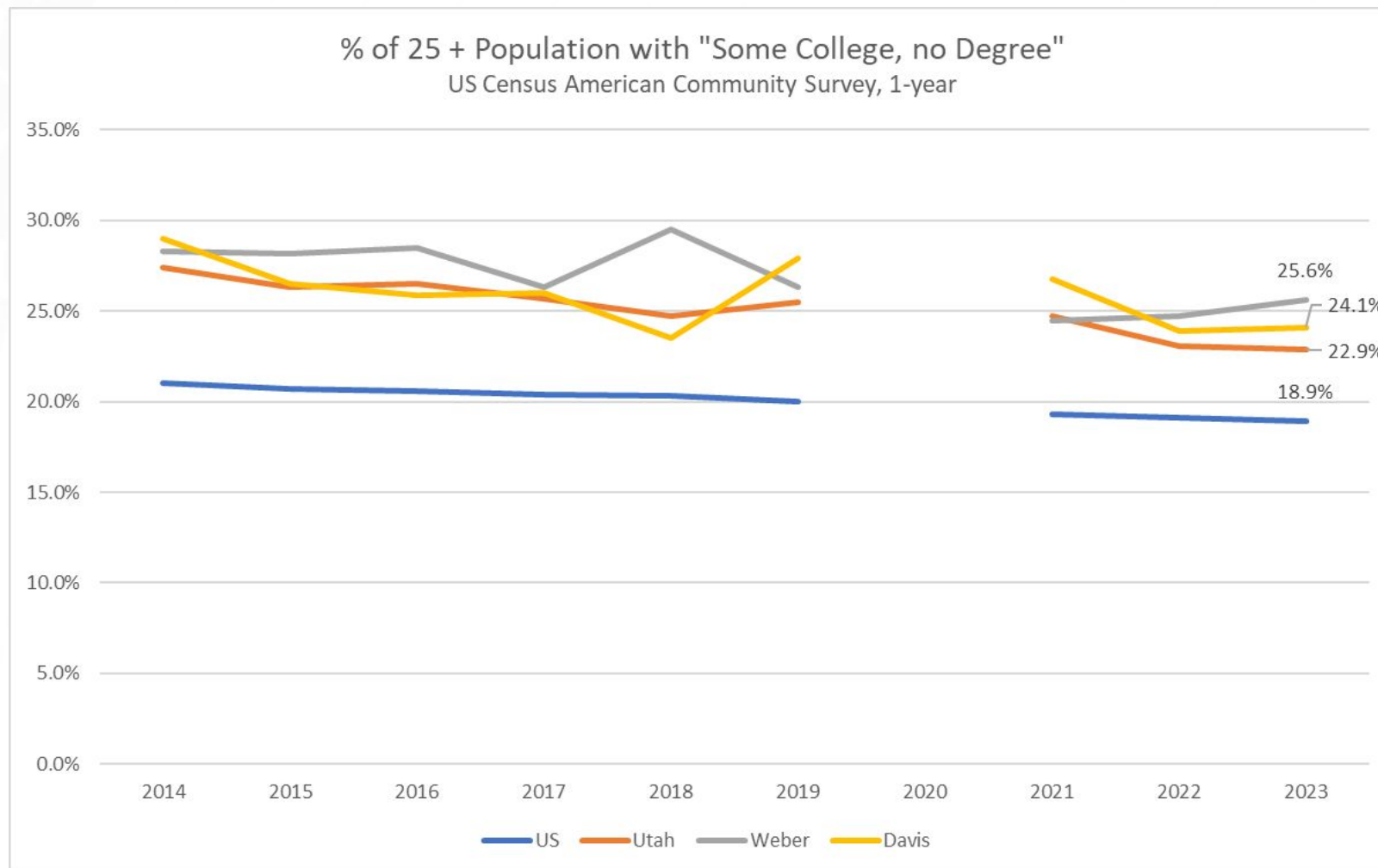


DATA

DATA
LIFE!



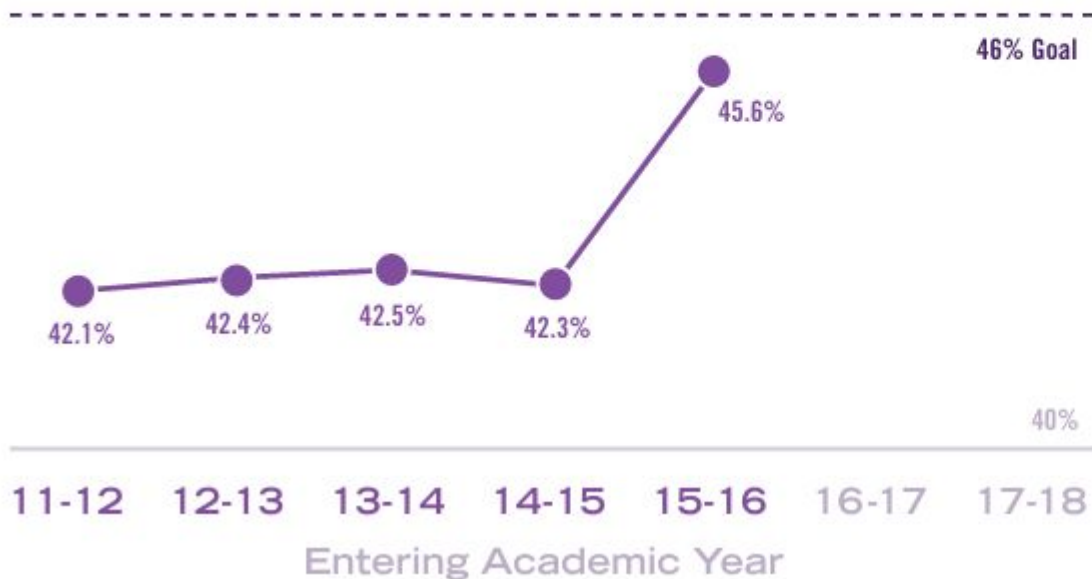
Some College, No Degree



DATA

WSU Amplified Strategic Plan

5 46% of Entering Students will Earn a Degree in 8 Years



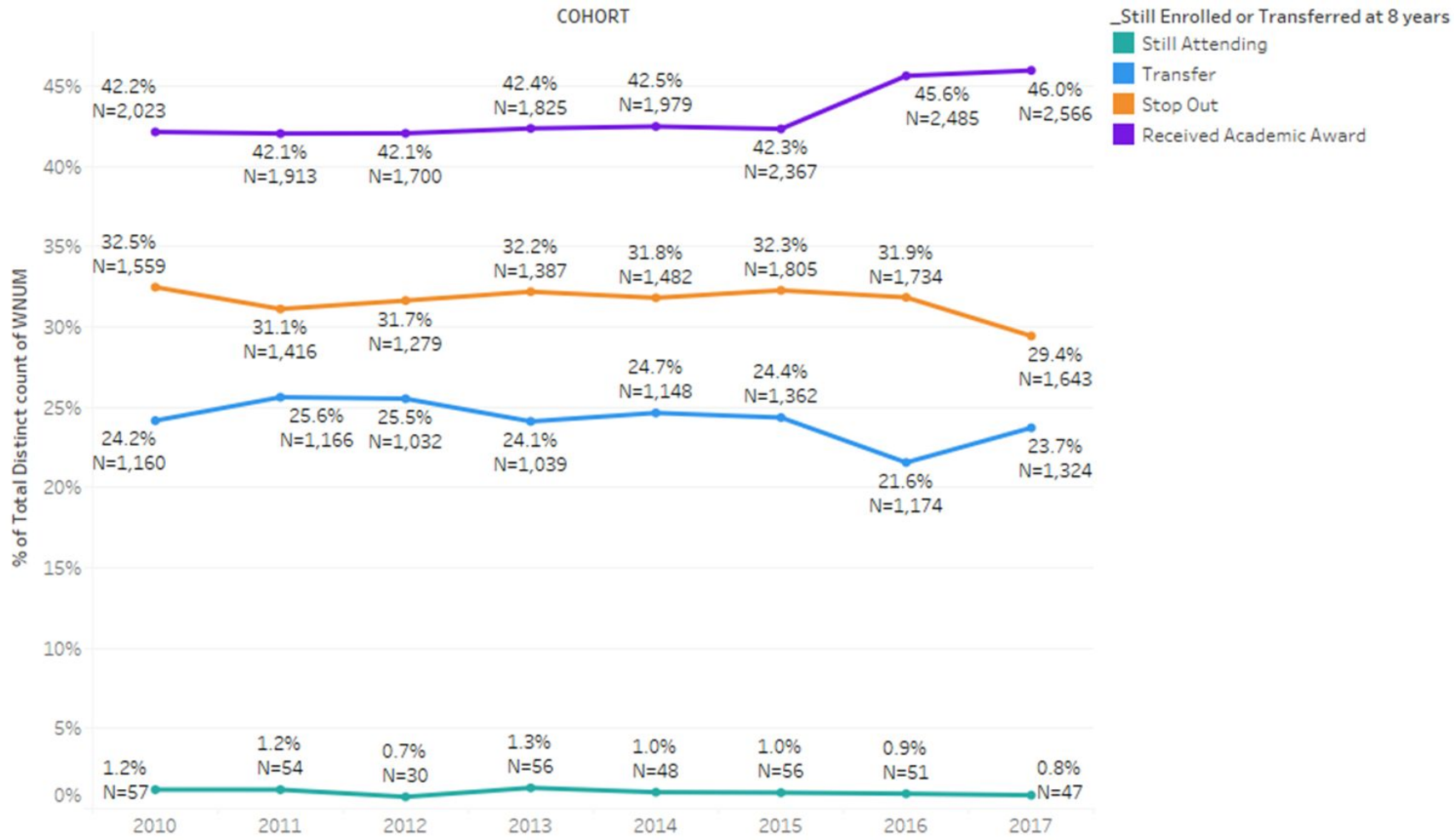
By AY 2025-26, 46% of entering students from AY 2015-16 will have completed a certificate, associate's or bachelor's degree (up from 42% for AY 2011-12 students).



DATA

IT'S LIFE!

Importance of Student Persistence



DATA

Barriers to Persistence

*Research at Broad Access

Institutions:

- Familial obligation
- Lack of financial support
- Part-time enrollment
- Full-time employment
- Other psychosocial & societal factors

WSU Early Alert Outreach:

1. Personal
2. Financial
3. Academic concerns
4. Transfer, military, mission



Barriers to Completing a Degree

WSU Graduation Survey

- Financial Issues
- Academic Challenges
- Personal Reasons
- Needed Additional Support Services
- Work Demands
- Mental Health
- Academic Preparation
- Lack of Engagement
- Mismatch with Institution



[Link to report](#)



Hands-on Worksheet

1. Dashboard walkthrough
2. Choose a student demographic and college/department
3. Find a trend or data point of interest
4. Report out



WSU Report Gallery

[Student Persistence and Success \[Tableau\]](#)

The Student Persistence & Success Dashboard provides users additional flexibility in reporting out student retention, persistence, graduation, and other measures of student success for



[Weekly Enrollment Dashboard \[Tableau\]](#)

Weekly Enrollment Dashboard details key enrollment metrics for upcoming semesters during open registration periods. This report highlights ongoing point-in-time enrollment trends for matriculated, degree-seeking students, courses Budget-Related FTE totals, and Semester-to-



[Program Review Undergraduate \[Tableau\]](#)

Keyw

This dashboard is designed to provide all key data points for degree-granting programs needed for the required program review process. The visualizations are designed to be proactive and easy to digest so that those completing their review have access to the necessary data elements in one standardized report. Information includes items such as



Keywords: [Enrollment](#) | [Majors](#) | [Program Review](#) | [SCH - FTE](#)



LOVE DATA WEEK
DATA + YOU
4-EVER!

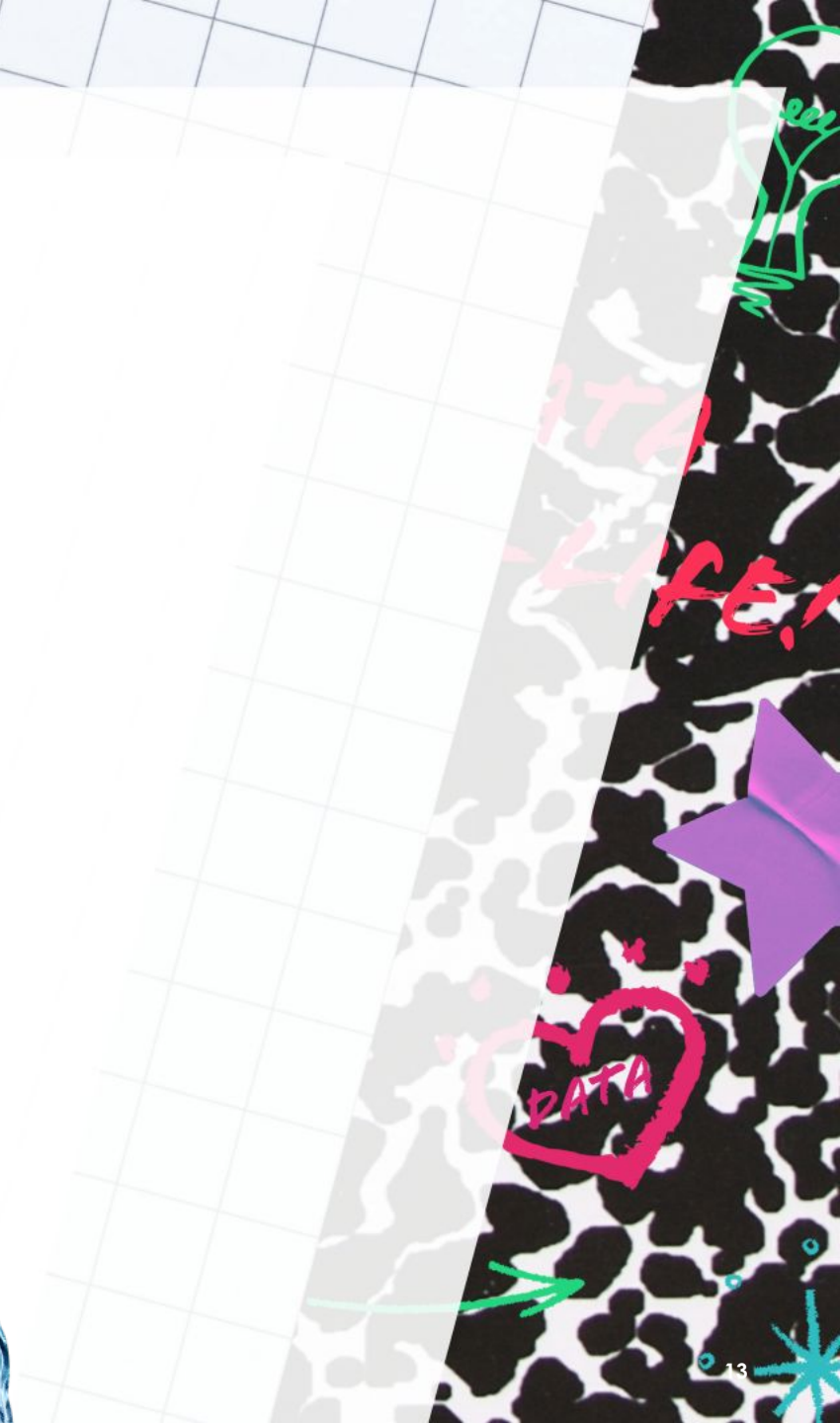
Hands-on Worksheet: Report Out

1. Dashboard walkthrough
2. Choose a student demographic and college/department
3. Find a trend or data point of interest
4. Report out



Wrap up

Insights, takeaways, and thoughts



How did we do?

Thanks for attending this Love Data Week session.

Your candid feedback is appreciated.

